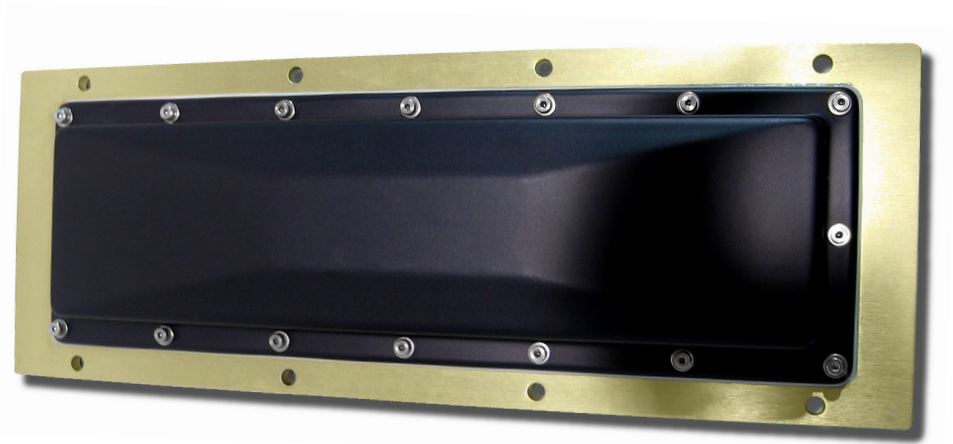


AA3234

Light Rail Antenna



The AA3234 Light Rail Antenna is designed specifically for light rail applications requiring a low profile, such as the undercarriage of commuter trains and people mover systems.

The AA3234 is designed to be mounted on a moving vehicle within 60 cm (2 ft) of the railway trackbed-mounted Amtech®-brand tags. This combination provides tag-antenna position information to an on-board vehicle computer system for a variety of applications.

The antenna can withstand up to 0.1 m (0.5 in) of ice over the case without damaging the contents. The rugged construction can withstand even the harsh cleaning chemicals used on the rail cars.

Features

- ▶ Constructed for high shock and vibration environments
- ▶ Rugged weatherproof enclosure
- ▶ Dimensions compatible with mounting underneath trains
- ▶ Available with or without rugged RF cable

AA3234 Light Rail Antenna

COMMUNICATIONS

Frequency Range

902 to 928 MHz

Antenna Gain (Peak)

9.5 dBi

Polarization

Linear-Horizontal

VSWR

< 2.0:1

Impedance (Nominal)

50 ohms

3 DB Beam Width

30° in E-plane and 80° in H-plane

HARDWARE FEATURES

Connector

The AA3234 is available in two configurations:

With cable: terminated with Type N Male connector on cable

Without cable: terminated with Type N Female connector on antenna

Contact your sales associate for available options

PHYSICAL

Dimensions

Size: 22.0 x 8.0 x 2.0 in. (56.0 x 20.0 x 5.0 cm)

Weight: 7.7 lb (3.5 kg)

Mounting Location

Underside of locomotive with 3/8 in. bolts

ENVIRONMENTAL

Operating Air Temperature

-40°F to +167°F (-40°C to +75°C)

Humidity

100% condensing

Vibration Tolerance

0.2 Grms, 10 to 100 Hz

Shock Tolerance

2 G_{peak}, duration 4 to 10 ms

For more information:

Sales Support

800.923.4824

Technical Support

505.856.8007

transcore.com