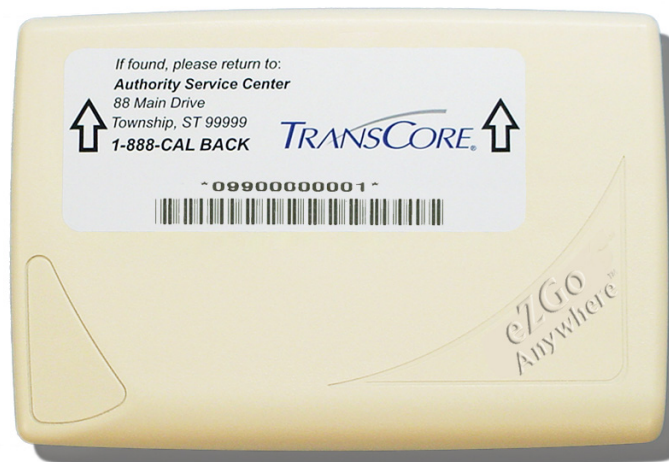


# eZGo Anywhere™ Standard OBU with IAG

## Features

- ▶ Multiprotocol options - IAG, Super eGo® (SeGo), eGo, and ATA modes
- ▶ High speed, high performance suitable for electronic toll collection and traffic management applications
- ▶ Read/write capability in IAG and SeGo modes
- ▶ Enhanced data security allows advanced anti-spoofing and anti-counterfeiting techniques
- ▶ Partitioned data fields for fixed factory and agency data
- ▶ Impact resistant, molded plastic cases available in six colors
- ▶ Non-replaceable internal battery with an eight-year design life, based on typical usage
- ▶ Internal windshield mounting with hook and loop, suction cups, or double-sided tape (secure mount)



TransCore's eZGo Anywhere™ Standard On-Board Unit (OBU) is a high speed, high performance radio frequency identification (RFID) interior-mounted tag suitable for electronic toll collection and traffic management applications where a standard, OBU is specified. It is a read/write OBU that supports adding and editing data to the OBU at high speeds in real-time.

The eZGo Anywhere Standard OBU, in conjunction with TransCore readers, enables advanced security techniques that ensure a tag's authenticity while preventing data corruption and/or alteration. In addition, tag cloning, spoofing, copying, or duplicating is prevented. All eZGo Anywhere OBUs support factory programming of fixed data fields that are locked at the factory and cannot be reprogrammed. Agency-programmed fixed data fields optionally can be locked by the agency after programming using password-protected programming equipment.

The eZGo Anywhere Standard OBU is designed for mounting to a vehicle's interior windshield surface using hook-and-loop strips or suction cups. These mounting methods provide for easy mounting and removal when portability is desired. This OBU can also be attached to the surface using double-sided tape for a secure mounting solution.

eZGo Anywhere OBU cases are constructed of highly durable, impact resistant molded plastic and are available in pearl (white), blue, orange, green, yellow, and gray colors. Markings on the OBU assist patrons in the proper installation and orientation.

Other IAG-compliant eZGo Anywhere OBUs include Feedback, HOT/HOV, Waterproof, and Exterior models.

# eZGo Anywhere™ Standard OBU with IAG

## COMMUNICATIONS

### Frequency Range

**IAG Mode:** 915.75 MHz (nominal center)

**SeGo Mode:** 902-928 MHz

**eGo Mode:** 902-928 MHz

**ATA Mode:** 902-928 MHz

### Trigger Frequency

**IAG Mode:** 915.75 MHz (nominal center)

**SeGo Mode:** Not applicable

**eGo Mode:** Not applicable

**ATA Mode:** Not applicable

### Polarization

Linear, horizontal

## SOFTWARE FEATURES

### Data Memory

**IAG Mode:** 256 bits

**SeGo Mode:** 2048 bits

**ATA Mode:** 120 bits

User memory programmable using wireless link

### Data Rate

**IAG Mode:** 500 kb/s Manchester

**SeGo Mode:** 80 kb/s Manchester

### Data Format

**IAG Mode:** Manchester keyed carrier

**SeGo Mode:** Downlink - Manchester keyed carrier; Uplink - FMO

### Error Checking

16-bit cyclic redundancy check (CRC)

## POWER

### Power Source

**IAG Mode:** Internal lithium battery

**SeGo Mode:** Beam (non-battery) powered

**eGo Mode:** Beam (non-battery) powered

**ATA Mode:** Beam (non-battery) powered

## LIFE EXPECTANCY

### Service Life

8-year design life

## PHYSICAL CHARACTERISTICS

### Weight

3.5 oz. (99.2 g)

### Dimensions

4.3 x 2.9 x 0.8 in. (10.9 x 7.4 x 2.0 cm)

### Color

**Six colors:** Pearl (white), blue, orange, green, yellow, and gray

### Case

Plastic cases are UV stable and are not affected by temperature extremes or severe conditions typical of this operating environment. The Standard OBU is shock and vibration resistant.

### Mounting Surface

**Interior:** Non-metallic windshield

### Mounting Method

Hook-and-loop or suction cup

## ENVIRONMENTAL

### Operating Temperature

-40°F to +185°F (-40°C to +85°C)

### Humidity

100% condensing

## REGULATORY

For IAG mode, this device complies with Part 15 of the FCC rules; other modes are modulated backscatter.

## COMPATIBILITY

**IAG Mode:** IAG

**Super eGo Mode:** SeGo, eIAG (w/IAG PNP RSE reader)

**eGo Mode:** ANSI NCITS 256-2001 Part 4.2 and ISO 18000-6B standards

**ATA Mode:** American Trucking Associations standard

## OPTIONS

### Labeling

- ▶ Customer specific tag programming information on printed label; check digit optional
- ▶ Barcode; check digit optional
- ▶ Custom laser-etching

### Tamper-Resistant Hardware

Secure mount available

## MODEL PART NUMBER

Order 13-8011-100, eZGo Anywhere Standard OBU

For more information:

Call **214.461.6443** (Sales Support) • **505.856.8007** (Technical Support)

© 2008 TC License, Ltd. All rights reserved. TRANSCORE and EGO are registered trademarks and EZGO ANYWHERE is a trademark of TC License, Ltd. All other trademarks listed are the property of their respective owners. Contents subject to change. Printed in the U.S.A.

412096-012 - 01/12

**TRANSCORE**  
transcore.com