

FEATURES

- **Extra-low profile**
- **Support for cargo sensors, temperature sensors, and more**
- **Inconspicuous appearance**
- **Extra-long battery life of five-plus years**
- **Ready light showing completed installation**
- **Direct vehicle connection**
- **GPS reporting**
- **Configurable "over-the-air"**
- **Meets J1455 standards**

Sense & Track™ Mobile Terminal



TransCore's sensor-enabled GlobalWave® Sense & Track Mobile Terminal is a compact all-satellite communications device. Using a two-way protocol, it sends reports, receives commands, and polls from anywhere throughout North America with full sensor suite capability. The Sense & Track Mobile Terminal with sensors becomes an integral part of the trailer, capable of showing loaded/empty status and providing data from other monitored systems such as tire inflation and temperature.

The location accuracy provided by GlobalWave's integrated Global Positioning System (GPS) technology and the ability to change reporting characteristics "over-the-air" in minutes provides customers with unparalleled control over their fleets. Use of the Sense & Track Mobile Terminal can reduce trailer-to-tractor ratio, prevent and reduce cargo theft, help recover misplaced or stolen equipment quickly, and reduce insurance costs.

Installation of the terminal unit, including GlobalWave's ultra-powerful and efficient cargo sensor, can be performed on loaded trailers, thereby saving maintenance time and effort. The low-profile data communications device is inconspicuous on the top of the trailer, out of sight from thieves or others who might misuse or tamper with equipment.

With software integration already complete for most major dispatch software packages, customers can easily poll and retrieve data from the Sense & Track Mobile Terminal into their existing enterprise dispatch software. Customers can locate equipment anywhere in North America within minutes and access trailer data without leaving their familiar computer screens.

Sense & Track™ Mobile Terminal

COMMUNICATIONS

Network

- Proven, reliable L-band geosynchronous satellite
- Secure data transmission - spread spectrum
- 24 hour-per-day coverage
- Full system redundancy
- Connectivity:
 - Internet
 - Frame relay
 - Leased line

Reporting

Three types of reports:

- Polls for real-time GPS location
- Pre-scheduled, configurable over the air, reports at 8 different intervals — none, 10 minutes, 30 minutes, 1 hour, 4 hours, 8 hours, 12 hours, 24 hours
- Events-based upon exceeding user-defined parameters

TYPICAL POWER CONSUMPTION

- Transmit power consumption: <10W
- Receive power consumption: <725mW
- Idle power consumption: <200μW
- GPS power consumption: <725mW

POWER

Direct vehicle connection or battery connection

PHYSICAL

- Dimensions: 4.5 in x 8 in x 0.8 in (11.43 cm x 20.23 cm x 2.032 cm)
- Weight: <1.5 lb (<0.68 kg)
- Fully integrated omni-directional transmit, receive, and GPS antennas
- Fully environmentally sealed

CONNECTORS

Weather-tight (IP67) low-profile power and I/O interface connectors:

- Main power connector: main power input, ground
- I/O connector 1: sensor power output, serial Rx and Tx, extended analog input, ground and spare
- I/O connector 2: sensor power output, 4 digital I/Os, analog input and ground

ENVIRONMENTAL

- Operational temperature range: -40°F to 185°F (-40°C to +85°C)
- Environmentally tested to SAE J1455 standards for:
 - Temperature
 - Humidity
 - Salt spray
 - Splash/immersion
 - Pressure wash
 - Dust and sand bombardment
 - Vibration and shock
- EMC/EMI tested to applicable FCC standards

SOFTWARE INTEGRATION

Data integration with most enterprise dispatch software systems including:

- ICC
- Maddocks
- McLeod
- TMW

OPTIONS

- External lithium battery pack options:
 - 5-year life @ 2 reports/day
 - Custom packs available
- Rechargeable lead acid battery pack

Sensors:

- Cargo
 - Temperature
 - Pressure
 - Door switch
 - Tire inflation monitoring
- Up to 4 digital (for example, switches)
Up to 2 analog (for example, temperature)

GLOBALWAVE MOBILE TERMINALS

Slap & Track™ Model 3300 terminal with high-performance tracking capability for basic tracking applications: PCN 6100041

Slap & Track™ Model 3400 terminal for high performance tracking applications, with replacement battery feature: PCN 6100069

MT3400S - kit with bracket and standard battery pack: PCN 6100077

MT3400E - kit with bracket and extended battery pack: PCN 6100076

Sense & Track™ Model 3550 sensor-enabled terminal: PCN 6100042

Sense & Track Plus™ Model 3000 sensor-enabled terminal with on-board application processor: PCN 6100067

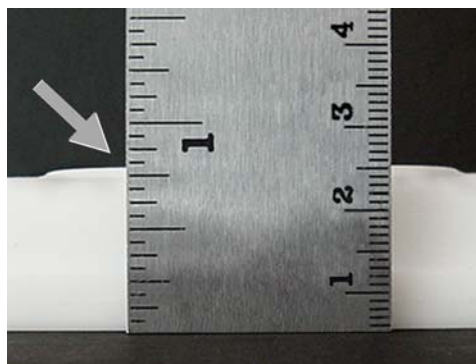


Figure 1 Low Profile

Low profile of 0.8 inches allows the Sense & Track Mobile Terminal to be mounted almost anywhere.



For product information call: United States: TransCore, 1.800.923.4824 Fax 214.461.6478
Canada: TransCore Link Logistics, 1.888.844.8725 x 2 Fax 905.795.0539
Outside United States and Canada: 1.214.461.6443 Fax 1.214.461.6478

www.transcore.com

© 2008 TC IP, Ltd. All rights reserved. TRANSCORE is a registered trademark and SLAP & TRACK, SENSE & TRACK, and SENSE & TRACK PLUS are trademarks of TC IP, Ltd. and are used under license; GLOBALWAVE is a registered trademark of TransCore Link Logistics Corporation. All other trademarks listed are the property of their respective owners. Contents subject to change. Printed in the U.S.A. Products covered by this document are protected by U.S. patent 5,991,279 and foreign equivalent patents.

411895-008 10/08